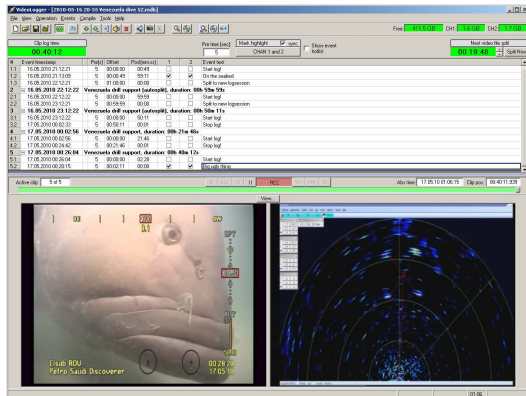


**Integrated HD-SDI and COMPOSITE video overlay and recording system,**



Example: 2 channel configuration



**BOTH OVERLAY AND LOGGING IS INTEGRATED IN 3U RACK PC – NO EXTERNAL BOXES!**  
**Field selectable video standard for each channel, up to 4 channels in total.**

## Features:

- Any mix of Composite and HD channels, up to 4 channels in total
- Up to 4 channel Video overlay, individual/same overlay on all channels
- Up to 4 channel recording, AVCHD format, bitrate up to 62.5Mbit
- Supports PAL, NTSC, 720p, 1080i (up to 60Hz) 1080p (up to 30Hz)
- **Well proven system - same VIGRA and Videologger software used by more than 300+ Videologgers in the subsea industry**
- Live preview during recording
- Stillpicture snapshot during recording and during playback.
- Video event log linked directly to video pictures. Video events are typed in by operator, or easy point&click operation from predefined list.
- Easy retrieval of video clips by double-clicking on video events. Video playback will then start off exactly at the position where event was linked to the video.
- Removable harddrives for extended storage.
- 3U rack PC

## Input/outputs:



- Up to 4 x HD-SDI BNC input for live input video
- Up to 4 x HD-SDI BNC output for live output video w/overlay
- Up to 4 x Composite BNC outputs for live output, downscaled (only limited quality for preview on composite monitors)
- Up to 4 x splitcable with audio + Composite Input (BNC). Balanced audio inputs on XLR connectors, for each video board.
- 8 serial ports and 2 Ethernet port for data-interfacing to survey/ROV/etc
- VGA / HDMI or DVI port for Windows monitor