

Options Video Logger Users Guide

a document by



Copyright(C) 2006-2008, Options AS

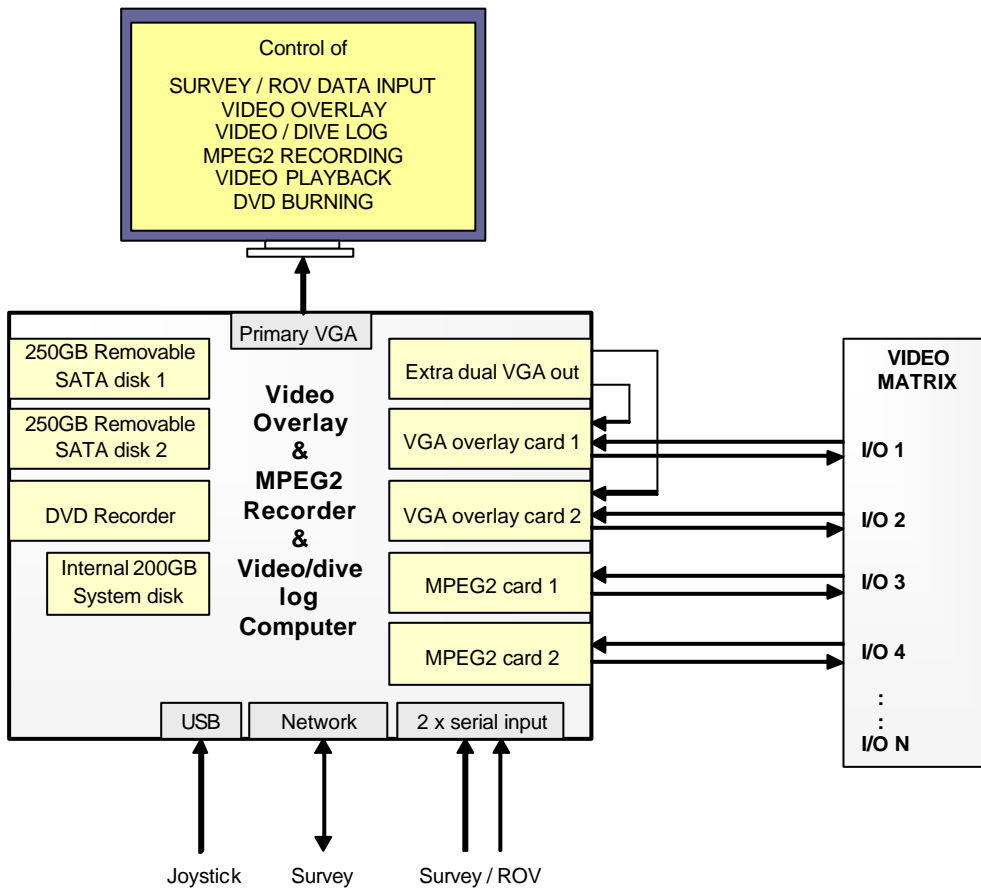
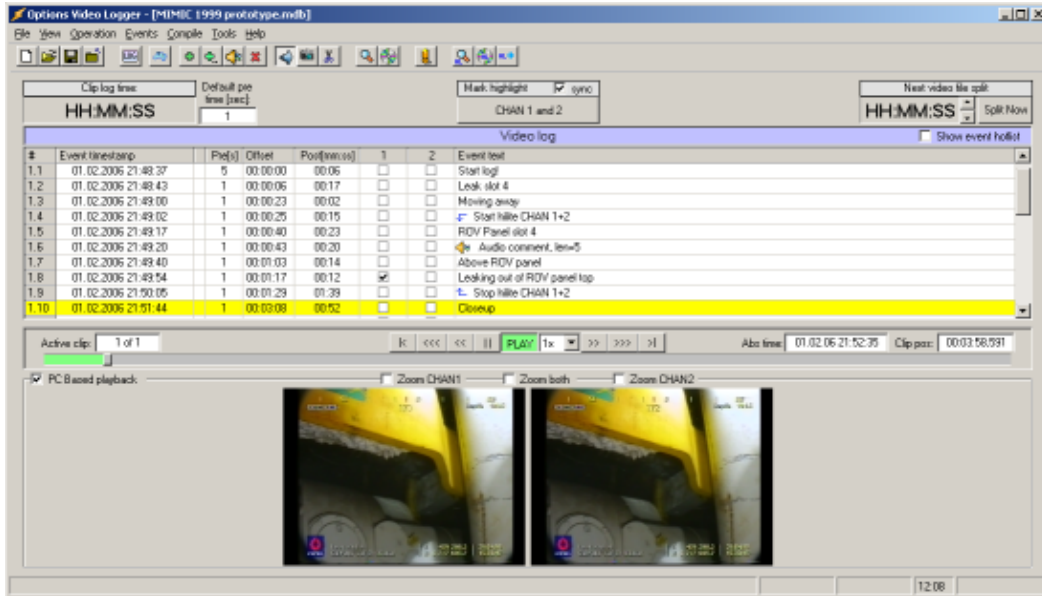
1. REVISION LOG.....	2
2. SYSTEM OVERVIEW	3
3. WIRING OF THE VIDEOLOGGER.....	4
4. OPERATION PROCEDURES	4
4.1 STARTUP OF COMPUTER AND SOFTWARE	4
4.2 CREATE NEW OR REOPEN LOGGER PROJECT	4
4.3 START/STOP VIDEOLOGGING.....	5
4.4 ADD EVENTS DURING VIDEOLOGGING/PLAYBACK	6
4.5 CAPTURE STILLPICTURES DURING LOGGING/PLAYBACK	7
4.6 PLAYBACK OF VIDEO	8
4.7 EXPORTING VIDEO CLIP FOR E.G. SENDING BY EMAIL	9
4.8 BURNING A DVD	10
4.9 EXPORTING VIDEO AND EVENTS TO A HIGHLIGHT PROJECT	11
4.10 MAKE BACKUP OF VIDEOLOGGER FILES	13
5. VARIOUS SCENARIOS	14
5.1 REPEATED JOBS WITH A SINGLE LOGGING FILE.....	14
5.2 HEY, MY REPEATED JOB IS SCATTERED ON MULTIPLE LOGGING FILES.....	14
5.3 I HAVE MPEG FILES WHICH I WANT TO INTEGRATE IN VIDEOLOGGER.....	14
5.4 HELP ... CANNOT LOG ANYMORE – DISKS ARE FULL!!!!	15
6. CONFIGURATION PROCEDURES.....	15
6.1 ADJUST RECORDING QUALITY TO REDUCE SIZE OF VIDEO LOGGING FILES.....	15
6.2 CONFIGURE FOR SVIDEO OR COMPOSITE INPUT	17
6.3 CONFIGURE AUTOMATIC OVERLAY PAGES.....	17
6.4 SETTING DEFAULT STORAGE FOLDERS.....	18
6.5 MANAGING EVENT HOTLIST	18
7. TROUBLESHOOTING.....	19
7.1 REPAIR OF MPEG FILES.....	19
7.2 NO OUTPUT ON VGA MONITOR	19
7.3 ONLY FLICKER ON OVERLAY.....	19
7.4 MONITOR 1 AND 2 HAS SOMEHOW CHANGED ORDER (2 TO LEFT, 1 TO RIGHT).....	20
7.5 MONITOR LAYOUT IS SCREWED UP, NONE OF ABOVE HELPS.....	20
7.6 OVERLAY/VIDEO RECORDINGS CONTAIN PARTS OF A PC WINDOW	20
7.7 ONLY ONE VIDEO CHANNEL IS RECORDING.....	20
7.8 ROV OVERLAY STRING DETECTED AS SERIAL MOUSE	20
7.9 NO BOOT DEVICE FOUND WHEN STARTING COMPUTER.....	21

1. Revision log

Date:	Revision:	Description:
16.02.2006	R001	Preliminary revision 1
08.06.2006	R002	New version of software with multiple source-clips in one file
11.07.2006	R003	Multiple new features
23.10.2006	R004	Added example scenarios.
31.01.2007	R005	Added video quality adjustment info
01.03.2008	R006	Live preview, stillpicture while capture
30.11.2008	R007	Updated to latest software version

2. System overview

The Video Logger system is based on a 19" rack mountable 4U high computer with several special video boards, and with custom data/video logging software:



3. Wiring of the Videologger

For wiring of the VideoLogger, see specific wiring guide for your version of the logger! Identify version by serial-number at front of rack PC cabinet! Then check www.videologger.no and find the correct wiring/quick-guide there!

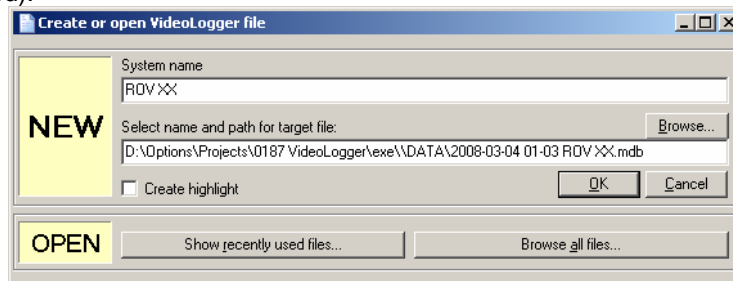
4. Operation procedures

4.1 Startup of computer and software

1. Start computer. Login should be automatic. If you are asked for username/password, try to use factory default username=Admin, password=vigra.
2. Start COMServer – verify comms with ROV and/or survey.
3. Start VIGRA. Verify overlay and layout on both channels.
These two files are used automatically by VideoLogger:
INTRO: C:\Program Files\Options Videologger\Overlay\Intro.mdb
STANDARD: C:\Program Files\Options Videologger\Overlay\Standard.mdb
(note: Before Videologger is started you will get DDE error for the LogAlarm linkfield.
See more details in procedure for “Configuring automatic overlay pages”)
4. Start VideoLogger, start logging!

4.2 Create new or reopen logger project

1. Click button for create a new file (note: This dialog is also displayed when Videologger is started):



2. Here you can now select different types of project.

NEW, standard (create highlight = off): This is the normal method for creating “blackbox” projects where all video is logged. Parts of the logged video can later be exported to a DVD or to a highlight project (see next project type)

NEW, highlight (create highlight = on): This method will save both video-events and videofiles into a separate highlight folder. Ideal for repeated jobs where all video need to be kept, e.g. a well summary highlight. You can log directly into this project and/or use it as target for exporting data from other blackbox projects.

OPEN: Reopen a existing project. This you will select if you want to continue working on a project, e.g. for a repeated inspection job. Click “Show recently used files” to get a list of the last used files, or click “Browse all files” for a normal filedialog where also other older projects can be selected.

4.3 Start/stop videologging

1. Make sure you have the correct project open in Videologger (see procedure for "Create new or reopen logger project")
2. Click on LOG button on toolbar.

3. Type in correct details for title / supervisor / jobno / etc.
4. Decide if you want the overlay to automatically display a intro-page at start of logging. Put checkboxes for Common / CAM1 / CAM2, and set for how many seconds the intro-page should be displayed. After e.g. 20 seconds the overlay will revert back to the standard page. See chapter "Configuring automatic overlay pages" for more information
5. Make sure recording is enabled for both CHAN1 and CHAN2. If only 1 camera is used, then the 2nd channel can be disabled by "unclicking" the green button.
6. Make sure correct logging quality is set. Normally HQ is a good enough quality. For more info, see "Adjust recording quality to reduce size of video logging files"
7. Make sure correct video input type (SVIDEO / Composite) is set. For more info, see "Configure for SVIDEO or Composite input"
8. Decide if you want preview and stillpicture function while logging. If you experience any unstability while logging, then don't use this function (if unstable, stop logging, reboot, and try again without preview!)
9. Click "Start Logging"
10. Let the system log as long as desired. Automatic splitting will be done every 1 hour or at specified interval.
11. Unclick the LOG button when you want to stop logging.

4.4 Add events during videologging/playback

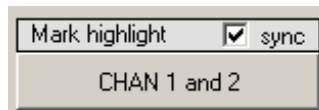
When video is logged (or during playback), text and/or audio events can be linked to the video. This is ideal for documenting the video and the dive, and can later be used as basis for burning selected clips to DVD, and for quick-navigation in the video. Also divelog/videolog can be exported to Excel spreadsheets for later printing.

Use the main toolbar for adding events:



1. Click green "+" for adding new empty text event (can also use Ctrl-E)
2. Click green "+..." for adding a predefined text event (can also use Ctrl-P)
3. Click orange sound icon for adding a audio recording event. Use a normal PC microphone connected to the MIC input on the computer.
4. Click red cross for deleting the active event.
5. You can also use a joystick where the joystick buttons are mapped to predefined events.

See own chapter "Managing Event Hotlist" for how to configure the event hotlists.

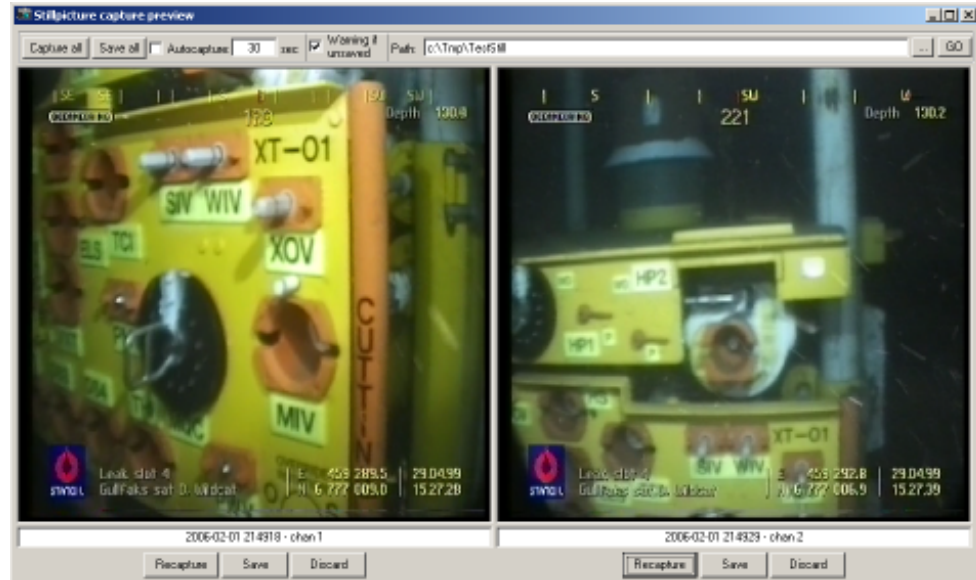


Highlight events: These are special events which mark start/stop of highlight sections. Click IN the button (so it is green) when you want to start marking highlight, and click the button OUT when you want to stop highlight marking. The highlight sections can later be burned to DVD, or exported to another project.

4.5 Capture stillpictures during logging/playback

(will only work during logging if live preview and stillpicture options are enabled!)

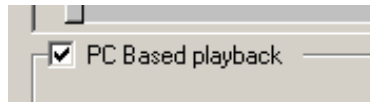
1. Click the camera capture-button, and a capture preview will be shown, 1 picture will be captured for each channel:



2. If you are not happy with the preview, press Recapture for the given channel, repeat until a good snapshot is acquired (unclick the Warning-checkbox to avoid save-warning...)
3. Press Save to save the captured images
4. Repeat step 2-3 if multiple pictures is required.
5. Click the GO button to open the folder where stillpictures are saved.
6. NOTE: You can also have automatic stillpicture capture every X seconds, using the "Autocapture" function. The program will then capture a new stillpicture every e.g. 20 second, and save to disk with date/time prefix.

4.6 Playback of video

Playback can be done either to the PC monitor, or to the video output port on the MPEG2 logging boards. The "PC based playback" checkbox in the main window selects method of playback:



PC based playback = ON → Playback will be to the Videologger window (on the VGA monitor). Both channels will be played back simultaneously, and you can use zoom buttons to zoom both/chan1/chan2.

PC based playback = OFF → Playback will be to the MPEG2 video output ports. Normally these outputs are connected to the video matrix, and can then be routed to any video monitor.

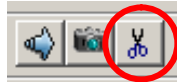
Playback is started by one of these methods:

- a) Double-click 1st column in the video event log. This will start playback from selected event.
- b) Move playback slider to desired time offset, playback will start immediately.
- c) Click/unclick the playback button. This will start playback from start.

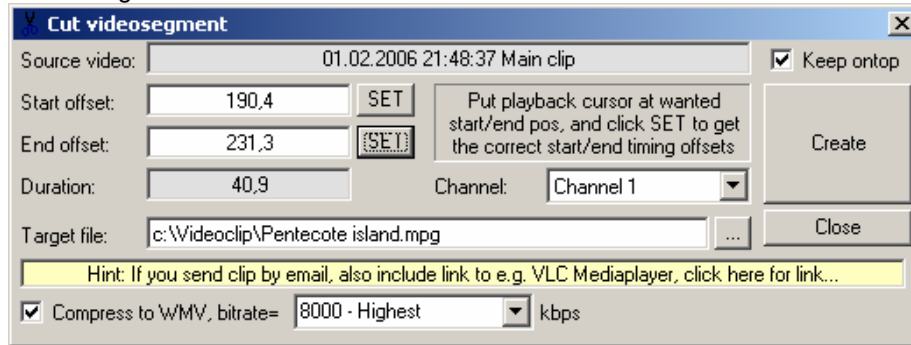
NOTE: During playback, you can add new video events the same way you do it when performing logging. Just click the green "+" buttons or orange audio-recording button on the toolbar.

4.7 Exporting video clip for e.g. sending by email

1. Click the scissor button on the main toolbar.



2. This dialog will then be shown:



3. Use the "Channel" dropdown listbox and select which video channel to copy video from.
4. Start playback and navigate playback to position where clip shall start (use buttons and timeline in the main window. Move the cutting-window if needed)
5. Click "SET" button for start offset
6. Navigate playback to position where clip shall end
7. Click "SET" button for end offset. The Duration-box will now show number of seconds for the clip.
8. Type in name of target file, e.g. C:\test.mpg
9. If you want a more compressed video format than MPEG2, also check the "Compress to WMV" checkbox, and set wanted bitrate. Both the MPEG2 and WMV files will now be created, so that you can compare quality and size afterwards.
10. Click CREATE button, and the videoclip will be created.
11. Create a new email, and add the new file as an attachment.

If the email has size limits, you can also use one of the many services on the internet for transferring big files, e.g. <http://www.transferbigfiles.com/> (here you select the video file and email of recipient, and the person will then get a link to where he/she can download the file)

4.8 Burning a DVD

DVD can be burned using two different methods

- a) Cliplist DVD, burn all events which are marked with a checkbox, OR
- b) Highlight DVD, burn all events between highlight markers

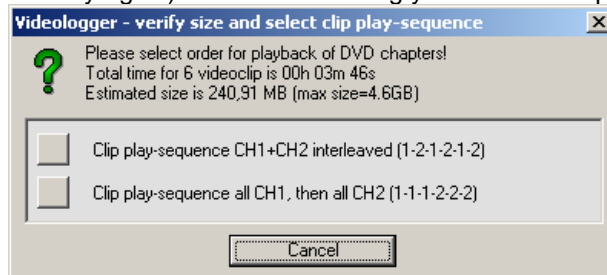
Method a) is the most common method, while highlight sections are more used as basis for exporting to other projects, instead of making a DVD directly.

Select events to include for DVD burning

1. For the events you want to include on DVD, click the CHAN1 and CHAN2 checkboxes at each event line
2. Also for each event, specify the POST time in seconds. This indicates how many seconds of video to include for the given event. POST time is normally auto-adjusted to include all video until NEXT event, but it can also be manually adjusted.
3. If you have tuned the POST-time, but want to reset POST-time back to default, then right-click on the event-line, and select "Posttime until next event"

Preview/save/burn the DVD

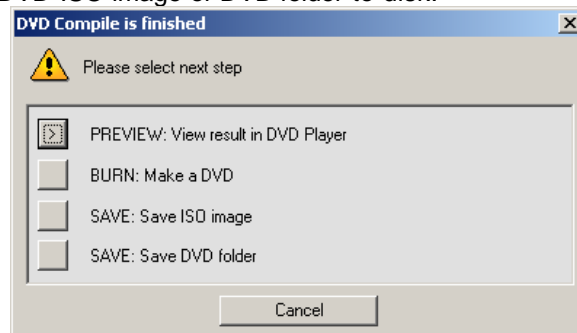
1. Click on the "Make cliplist DVD" button on the toolbar.
2. Verify that size is within 4.6GB limit (if size is above, press Cancel, select fewer events and then try again). In the same dialog you also select playback sequence:



CH1+CH2 interleaved: Play clips sorted by time, so that channel 1 and channel 2 clips will alternate based on start time of the clip.

All CH1 first, then all CH2: Play first all clips from channel 1, then start over again with all clips from channel 2

3. After clicking OK, the system will start to process the files. This will take some time, and involves cutting out sections from selected MPEG files, demuxing into video+sound, creating menu pictures for the DVD menu, etc.
4. When DVD making process is finished, you will have the option of previewing or burning the DVD ISO image or DVD folder to disk:



4.9 Exporting video and events to a highlight project

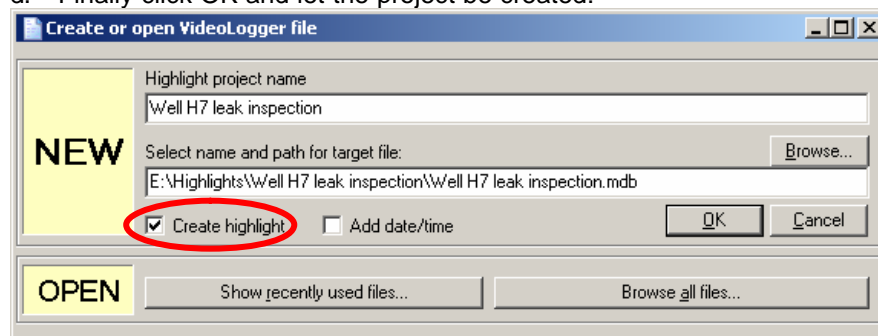
This type of Videologger project is nice to have if you record a lot of video during normal operation, and you only want to keep part of it and then sometime in the future create a highlight DVD. This can be done by exporting video parts and events to a special highlight project.

Each highlight project will save its files within its own subfolder, so that both the MDB eventlog and all the MPG videofiles are kept in the same place. This makes it easier to keep track of which videofiles belong to the project, so that the files are not deleted by accident when cleaning up the logger disks.

Highlight step 1: Create a new highlight project:

(note: If you want to export into an existing highlight-project, then skip this step)

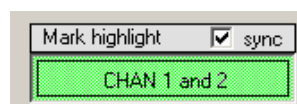
1. First you need to define a base folder for where to save your highlight projects. Select [Tools, Application settings] from the menu, then define the "Highlights base folder". Set this to e.g. "E:\Highlights"
2. Create a new highlight project:
 - a. Click NEW button on toolbar or select [File, New].
 - b. Click the checkbox for "Make highlight".
 - c. Also if needed, click the checkbox for "Add date/time". This will timestamp your folder+filename. Note that this is optional!
 - d. Finally click OK and let the project be created:



After the highlight project is created, you will normally just close it again! Yes... because now you will open the other normal (blackbox) projects where you have the video you want to export!

Highlight step 2: Mark highlight-sections in normal Videologger projects:

1. Close the newly created highlight project
2. Open up the project where you have the source video.
(or create a new normal "blackbox" project if you want to do the highlight processing simultaneously while logging)
3. Start playback (or log live video), and whenever you know there will be interesting parts, click the HIGHLIGHT button above the event list. Keep it pressed (green) as long as you want the clip to last:

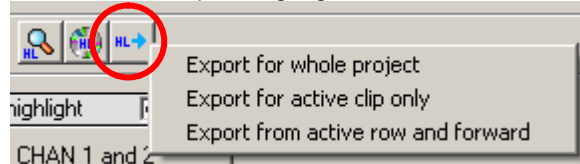


3. Move playback slider to where you want highlight to end, and unclick the HIGHLIGHT button.
4. Repeat clicking HIGHLIGHT button every time you want to keep interesting parts.

5. NOTE: "Inside" a highlight section you can also add events as normal, e.g. like this:

1.36	01.02.2006 22:40:06		1	00:51:30	00:07	<input type="checkbox"/>	<input type="checkbox"/>	Start hilite CHAN 1+2
1.37	01.02.2006 22:40:14		1	00:51:37	00:26	<input checked="" type="checkbox"/>	<input checked="" type="checkbox"/>	At template
1.38	01.02.2006 22:40:39		1	00:52:03	05:36	<input checked="" type="checkbox"/>	<input checked="" type="checkbox"/>	Port 1 corner
1.39	01.02.2006 22:41:13		1	00:52:37	00:30	<input type="checkbox"/>	<input type="checkbox"/>	Stop hilite CHAN 1+2

6. After you are finished logging video, it is time to export the clips to your highlight project, click the the "Export Highlight" button on the toolbar, and a menu will pop up:



Export for whole project = Export all highlight sections in the current project

Export for active clip only = Export only highlights inside the currently active clip

Export from active row and forward = Export all highlight sections from active row and forward. Use this one when you perform incremental building of highlight projects.

7. A browse dialog will be shown. Browse to and select the Highlight project file you created in first step.
8. When you click "OPEN" in the browse dialog, selected highlight clips will now be extracted and copied into your highlight folder

This procedure you can repeat several times to gradually build up your highlight file.

Highlight step 3: Reopen and create DVD:

When it is time to make a DVD, you just reopen the highlight project same way as any other normal project. Select which events to include on DVD, and then click "Make cliplist DVD" button. (see procedure for "Burning a DVD")

4.10 Make backup of Videologger files

Videologger video files huge and are saved to E: and F:

However the event logs and normally also stillpictures are saved on the system disk C: so that it is not lost when the videodisks are periodically cleaned.

To also make a backup of the files on the system disk (e.g. before sending in a Videologger for service), make a backup of these folders and subfolders:

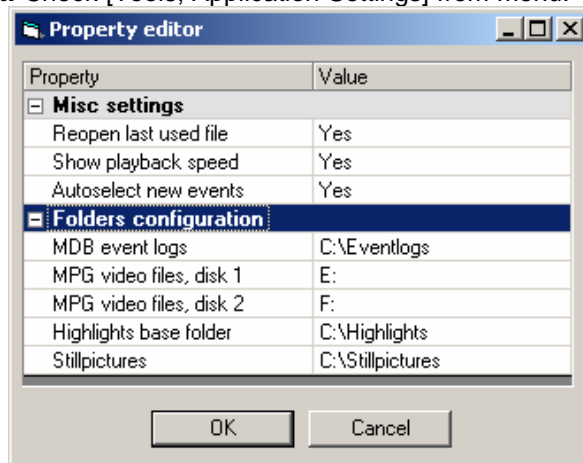
C:\Program Files\Options Videologger

C:\Program Files\VIGRA

Alternatively you can make a smaller backup by only including a limited set of subfolders:

C:\Program Files\Options Videologger\Data	- Event logs, MDB files
C:\Program Files\Options Videologger\Stillpictures	- Stillpictures, JPG files
C:\Program Files\Options Videologger\Exports	- Dive logs and Videologs, XLS files
C:\Program Files\Options Videologger\Overlay	- Overlay config, MDB files

Also, important: Check [Tools, Application Settings] from menu:



If custom paths are defined here (like above), then make sure these folders are also included when making a backup!

5. Various scenarios

5.1 Repeated jobs with a single logging file

If you have a job which will continue over some time, you might want to build a video archive for this job. The same Videologger file can be reused, and more logging sections can be added.

1. Start computer, COMServer, VIGRA and Videologger as normal
2. Open the file you previously used for the same job
3. Click LOG button on toolbar, set correct parameters for the new entry
4. When clicking OK a new logging section will be added, and you insert events as normal.

Note: It is also possible to create a special **highlight project**, where you cut parts of the original file, and then export this into the highlight project. See own procedure for doing this!

5.2 Hey, my repeated job is scattered on multiple logging files...

Not everyone knows that it is possible to reuse the same file for multiple logging sessions. If you are in a situation where a single job is divided into multiple logging files, then it is possible to re-integrate all these files into a single master file:

1. Start computer, COMServer, VIGRA and Videologger as normal
2. Open the 1st logging file used for the job.
3. Select [File, Import from logger (MDB) file]
4. Click "Browse" and select file to import from
5. Set checkbox in front of each clip to import.
6. Click OK
7. Repeat step 3-6 for each file you want to import from!

After import is completed you can clean up the system by deleting the old MDB files which you now have imported. NOTE: If you delete a MDB file, you will **not** delete the linked MPEG (video) file, so this should be safe!

5.3 I have MPEG files which I want to integrate in Videologger

It is possible to integrate "raw" MPEG movies into a logging session in VideoLogger. This can be useful if e.g. the original logger file is deleted/destroyed, or if you want to import a videofile from another system.

After import it is possible to add events during playback, and then finally burn a DVD.

1. Start computer, COMServer, VIGRA and Videologger as normal
2. Open the logging file where you want to import into.
(or create a new blank file if you want to start from scratch)
3. Select [File, Import from video (MPG) files]
4. The (almost standard) logging dialog will now be shown. But in lower end of dialog the buttons for specifying video quality is now replaced with import-buttons where you can select source-file for CHAN1 and CHAN2
5. Click "Sourcefile CHAN1" button. Select MPEG file and then click OPEN
6. Click "Sourcefile CHAN2" button. Select MPEG file and then click OPEN
7. Adjust start time if needed.
8. Adjust title/supervisor/jobno etc
9. Click OK button. Files will now be imported, and a new clip is added to your logging timeline.

10. Perform playback of clip, and add events as needed (click on "+" button on toolbar while doing playback)

5.4 Help... Cannot log anymore – disks are full!!!!

The Videologger program will normally save its files to E: and F: drives. When these drives are filled up with video, the program will show a warning message when you attempt to start recording, and then abort the operation.

To free up more space on the disks, do as follows

1. Open My Computer, double click on E: or F: (name is VIDEO_01 or VIDEO_02)
2. Preview files by double-click to open directly in Mediaplayer.
3. Verify which files can be deleted.
4. Mark the files which you are absolutely sure can be deleted. (Use Ctrl + Click to mark several files)
5. Click Del to delete the marked files.

NOTE: The logger database files (MDB) are saved on C: drive in the folder
C:\Program Files\Options Videologger\Data.

These MDB files are very small, and not normally deleted! (kept for reference as a complete divelog!)

6. Configuration procedures

6.1 Adjust recording quality to reduce size of video logging files

The Videologger system can record video at very high quality, but logging files will then also be very big. Unless video pictures from ROV is exceptional good, it is not necessary to record at highest quality. Experiment with logging small clip at different quality presets:

PRESET	SETTINGS (Mode,Res,Avg,Peak)	MB per minute
1 – VLQ (Very Low Quality)	VBR, 720x576, 2000 / 6000 Approx 1 sec for stabilizing picture.	18 – 36 MB / min
2 – LQ (Low Quality)	VBR, 720x576, 3000 / 6000 Subsecond for stabilizing picture.	25 – 38 MB / min
3 – Standard	VBR, 720x576, 4000 / 6000 Good for normal operation	32 – 41 MB / min
4 – HQ (High Quality)	VBR, 720x576, 5000 / 8000 Better quality	40 – 53 MB / min
5 – VHQ (Very High Quality)	VBR, 720x576, 8000 / 12000 For very good video quality	63 – 81 MB / min

(setting 4 - HQ is now default!)

It should always be verified that a given recording quality gives good enough playback quality. Test under different conditions. Especially if there is a lot of movement in the picture it is important to test, a non-moving picture can be very good, but when ROV starts to move the quality can be really bad!

Test video logging quality as follows:

1. Start computer, COMServer, VIGRA and Videologger as normal
2. Create a new logging file for testing
3. Click LOG button on toolbar
4. CHAN1: Use a preset Recording quality (1..5) or set custom quality

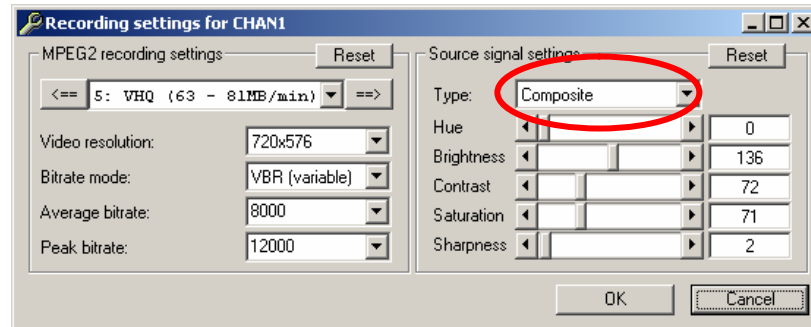
5. CHAN2: Use preset 5=VHQ. This will be the reference recording.
6. Click OK to close logging dialog and start logging
7. Make sure you have same video input on both video channels.
8. Record some video with typical video pictures you will see in the job to be done. Make sure you include movement in the video picture. (quality is much better for non-moving pictures than for moving pictures)
9. Stop logging
10. Run playback of the video, and check if quality is acceptable, compare with the high-quality picture of channel 2. Also possible make a DVD to double-check if quality is good enough.
11. Repeat step 5 to 13 with higher/lower quality (high quality = high bitrate, low quality = low bitrate)

6.2 Configure for SVIDEO or Composite input

Videologger with serial higher than 27 can perform logging of SVIDEO directly from the overlay boards, while simultaneously feeding composite video to the video matrix and monitors.

To configure SVIDEO / COMPOSITE logging, do as follows:

1. Click LOG button
2. Click “...” button at right edge of CHAN1 or CHAN2 settings. This dialog will then be shown:



3. Select SVIDEO or Composite, then click OK

NOTE: Here you can also adjust input signal brightness, contrast, etc. Click RESET to revert back to default settings.

6.3 Configure automatic overlay pages

The Videologger and VIGRA programs interact primarily during start of videologging. Here Videologger will remote-control VIGRA to open correct intro page for e.g. 20 seconds, and then afterwards automatically switch to a standard operation page.

The overlay files which are automatically used is stored in the folder

“C:\Program Files\Options Videologger\Overlay”.

And the files which Videologger/VIGRA will attempt to use are:

Mode	Intro file	Standard file
Common, same overlay on all channels	Intro.mdb	Standard.mdb
CAM1, individual overlay on channel 1	Intro_ch1.mdb	Standard_ch1.mdb
CAM2, individual overlay on channel 2	Intro_ch2.mdb	Standard_ch2.mdb

If one of the intro/standard files are not there, you can just make a copy of any other overlay file, and then modify it to get correct wanted layout.

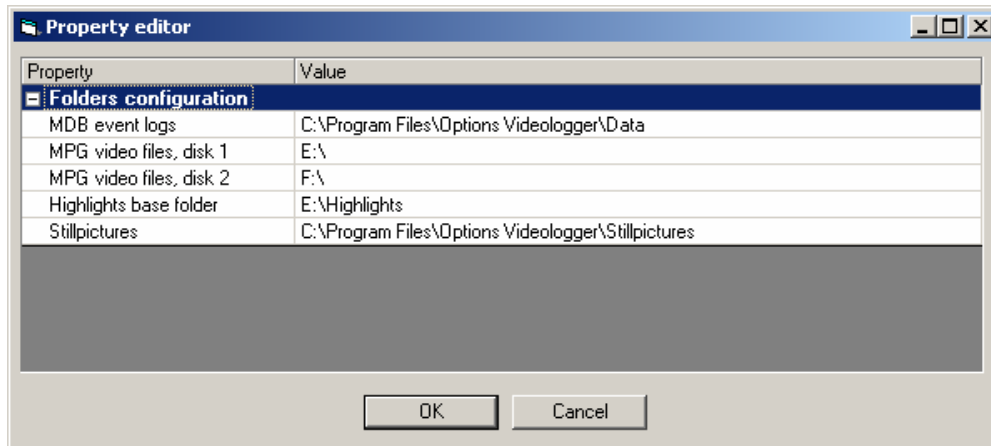
In the overlay files, these link fields can be used:

DDEServer	DDETopic	DDEItem	Description
Videologger	Intro	txtTitle	Title for the logsession
Videologger	Intro	txtSupervisor	Supervisor
Videologger	Intro	txtJobNo	Job number
Videologger	Intro	txtSystem(0)	System name 1
Videologger	Intro	txtSystem(1)	System name 2
Videologger	Intro	txtLocation	Location
Videologger	Intro	txtDiveNo	Dive number
Videologger	Intro	txtFree1	Free text #1
Videologger	Intro	txtFree2	Free text #2
Videologger	Intro	LogAlarm	Display warning on overlay if any

			error occurs during logging
--	--	--	-----------------------------

6.4 *Setting default storage folders*

Select [Tools, Application Settings] from menu. This will show a dialog where you can customize where files shall be saved as default:



6.5 *Managing Event Hotlist*

The event hotlist defines which events will be available for quick-select by joystick or mouse. Several different hotlists can be maintained. Items can be added/deleted as required!

- Select [Event-hotlist, Open List] from menu to select a new list
- Select [Event-hotlist, Save List as] to save the list to a new name.
- Select [Event-hotlist, Add line] to add new line to current list.
(or put cursor on last line in list, and then press down-arrow!)
- Select [Event-hotlist, Del line] to delete active line in current list

7. Troubleshooting

7.1 Repair of MPEG files

Here are some tools to verify and/or repair videofiles:

PixelTools MPEG Repair – kommersielt og dyrt verktøy – ca USD 3000	http://www.pixeltools.com/MpegRepair.html
MPEG2 Validator – can detect if it is fault in a videofile.	http://www.geocities.com/gabrielgoc/
VCD gear	http://www.videohelp.com/tools/vcdgear

7.2 No output on VGA monitor

This applies to computers with Pentium M based motherboards. These motherboards has an internal LCD connection which is not in use. If computer is booted up without external VGA connected, then the internal LCD will take over, and your VGA monitor will be black when reconnected.

After boot is completed, try to press Ctrl+Alt+1 (or Ctrl+Alt+F1).

This will toggle display from internal LCD (which is not in use) to external VGA

7.3 Only flicker on overlay

You have a video picture, but the overlay is only flicker.

Test a)

Check the VGA cable going into the overlay card. Completely unscrew cable at both ends, then reattach. Tighten screws. If cable is loose, flicker can occur.

Test b)

If still trouble, it could be the unit has started flickering due to problem with incoming video signal (e.g. bad sync). It is then possible to re-init the unit by following this procedure:

1. Attach programming cable to Mini-DIN connector on overlay board, and COM2 on the PC.
2. Start "TV One Control Panel"
3. Type 2 in "Use COM port" box
4. Select "CS-460 Eclipse PCI/ISA"
5. After load from device, select "Mode" from list at right (line 6)
6. Then in Mode-box at left, select
 - a. Genlock – picture now seems "screwed", but static
 - b. PC Out – you should now get stable picture with ONLY overlay, black background
 - c. Mix – you should now get stable picture with overlay and VERY dark background, video can be barely seen
 - d. Overlay – Video should now be OK, with overlay ontop!

Test c)

1. Shut down computer completely
2. Pull out power cable
3. Wait 20 sec
4. Insert power cable
5. Start PC

Test d)

If you are only using black/white signal on this channel, it is possible to enhance video stability by using Luminance connector on SVIDEO in/out.

7.4 Monitor 1 and 2 has somehow changed order (2 to left, 1 to right)

This error was experienced after sudden power break on a ROV system. When booting system, the primary monitor and overlay monitors had swapped order)

Normally monitor 1=Intel adapter, 2=matrox.

When fault occurs, 2=Matrox, 1=Intel

Check/repair steps:

1. Reboot computer, go into BIOS (press DEL repeatedly when booting)
2. Select "Advanced chipset features"
3. Select "Init Display First", verify it is set to "Onboard/AGP"
4. Save settings, reboot
5. After computer has finished booting, rightclick on desktop, select "Properties"
6. Select "Settings" tab
7. Check that
 - Monitor 1=Intel, 2=Matrox
 - Resolution of monitor 1 = 1024 x 768
 - Resolution of monitor 2 = 1600 x 600
 - Coordinates of monitor 1 = 0,0
 - Coordinates of monitor 2 = 1024,0(drag monitor with mouse to get coordinates displayed/adjusted)
8. Start VIGRA overlay program. Possibly also drag overlay-window and COMServer back to primary monitor (if windows are instead shown on 2nd monitor...)

7.5 Monitor layout is screwed up, none of above helps

If the computer has been without power for a long time, it is a risk that the CMOS battery backup has died, and the custom BIOS settings has been lost. To reinit, do as follows:

Standard features, Floppy A = disabled

Advanced Chipset Features, Init Display First = Onboard/AGP

Peripheral Devices, IDE device, IDE controller, Secondary IDE, disable

Peripheral Devices, IDE device, IDE controller, Onboard SATA, disable

Peripheral Devices, Super IO device, Printer port = Normal

Peripheral Devices, ????, FDC controller = Disabled (FDC = Floppy Drive Controller (?))

Next, save the settings, and try to boot the computer again. Verify in Device Manager that none of the items has a yellow exclamation point next to it.

7.6 Overlay/Video recordings contain parts of a PC Window

This can occur if Windows on primary VGA monitor is dragged to far to right edge. Drag them back in left direction!

7.7 Only one video channel is recording

This can occur if there has been a crash during previous recording. Try to reboot the computer!

7.8 ROV overlay string detected as serial Mouse

In COMServer you will get an error message saying that the COM-port is not available. This sometimes happens when Windows believe that the ROV overlay string is a serial mouse instead (!)

To fix:

Alternative A: Go into Device Manager, find the Serial Mouse, and disable it (do not delete it).

Alternative B: Use Notepad and edit "C:\Boot.ini". Add "/fastdetect" as option to the entry in [operating systems] section, e.g.

[operating systems]

```
multi(0)disk(0)rdisk(0)partition(1)\WINDOWS="Microsoft Windows XP Professional" /noexecute=optin /fastdetect
```

(note: Alternative B seems to not always work. So be prepared to use alternative A...)

7.9 No boot device found when starting computer

When starting computer, press DEL to enter BIOS.

Then

- a) Check "Standard CMOS features"
 - IDE Channel 0 Master = e.g. Maxtor 6L250R0 (or similar)
 - IDE Channel 0 Slave = e.g. NEC DVD_RW ND-3550A (or similar)
- b) Check "Advanced BIOS features"
 - First boot device = CD-ROM or Hard disk (both should work)
 - Boot priority, check that Ch0 M. is at top! (e.g. Maxtor 6L250R0)
(both SCSI devices should be below, this is the hotswap disks)